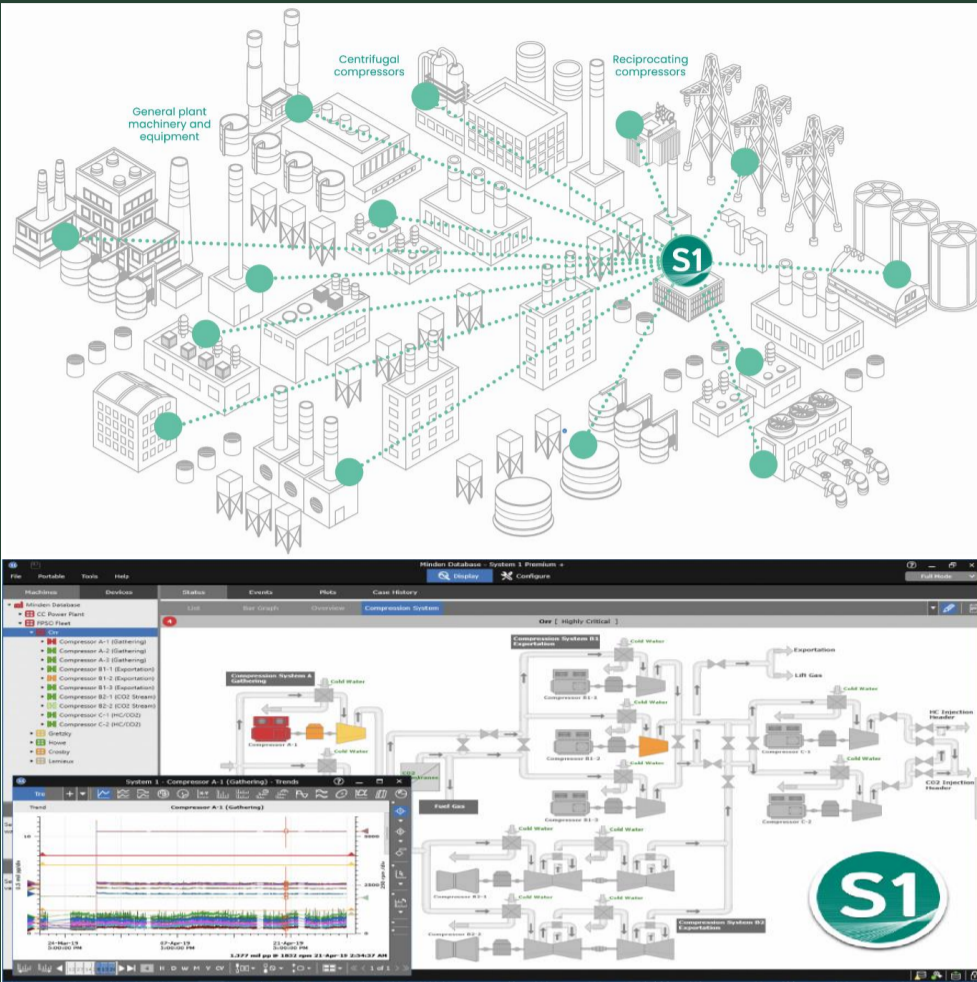


System 1 Brings it all together



Overview

Purpose

Provides plant-wide condition monitoring insights to reduce risk, increase productivity, and minimize unplanned downtime.

Key Features

Streamlines decision-making processes by bringing machine data into a single platform, providing clarity and context to your operations and enterprise.

Expertise

Harnesses decades of Bently Nevada's machinery research and advanced diagnostics expertise, serving as a key component of successful digital transformation in any industrial facility.

Core Capabilities

The premier Edge historian and condition monitoring platform, seamlessly combining Connectivity, Analytics, and Visualization capabilities.

Three Pillars of System 1

Connectivity

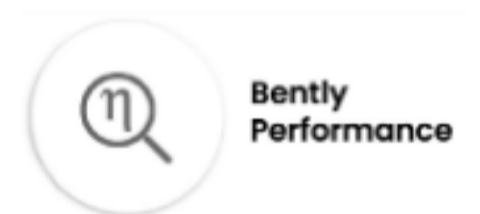
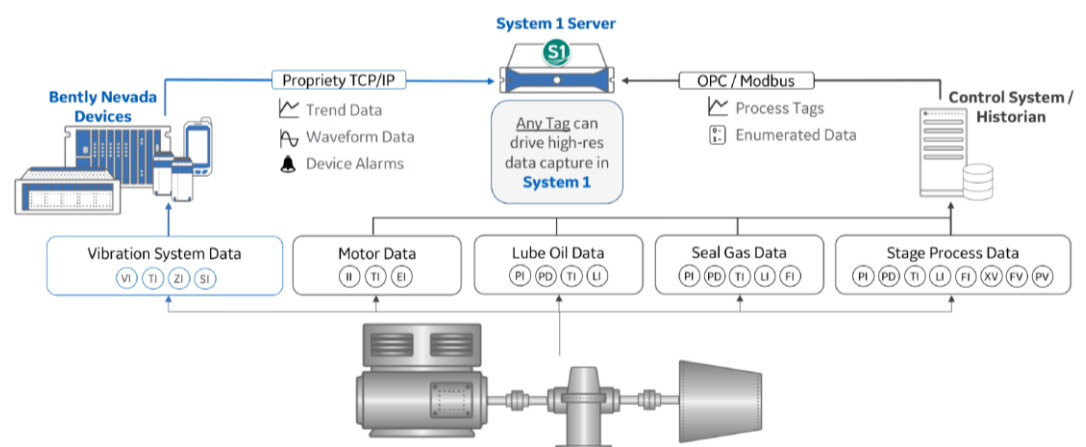
Connects to Edge data sources to collect high-resolution vibration, process, and control system data. It supports data collection at 1-second intervals from Bently Nevada devices (such as 3500 and Ranger Pro), PLCs, and third-party historians.

Analytics

Enables the configuration of threshold alarms based on machine operating states, with four levels of alarm settings per measurement regardless of the data source. 'Decision Support' allows users to create custom rules for gaining deep, actionable insights.

Visualization

Graphically represents plant-wide systems using an HMI Builder equipped with a built-in symbol library. A wide variety of plot types are available to analyze collected data and rapidly diagnose machinery faults.



[Channel Partner]

General Capabilities

Distributed Deployment

Supports a client/server communication architecture based on TCP/IP protocols, enabling flexible system scalability. A single server can support up to five online condition monitoring databases simultaneously, allowing for efficient management and operation of plant-wide data.

Data Replication

Provides a robust data replication process via data diodes or firewalls. This ensures a secure environment where System 1 data can be accessed from external business networks without compromising cybersecurity.

User Security

Integrates seamlessly with Windows domain and local user account management. It supports granular role-based access control – including Administrator, Advanced, and Basic roles – to enhance system security and ensure operational transparency.

Database Capacity

Features an embedded PostgreSQL engine for reliable storage and high-speed processing of large-scale data. Each database is capable of supporting up to 5,000 assets, providing the robust scalability required for large industrial facilities.

System 1 Ordering

Part Number : System 1 EVO PKG - AA - BB - CC - DD

Subscription

AA : License Types

O1	Premium
O2	Premium Plus
O3	Administration

BB : Server Spec.

O1	HPE ML350Gen11 Server
O2	Dell R550 Server

CC : Hardware

O3	3500 Import
----	-------------

DD : Serial

SH26	2026 Purchase
------	---------------

[Channel Partner]

